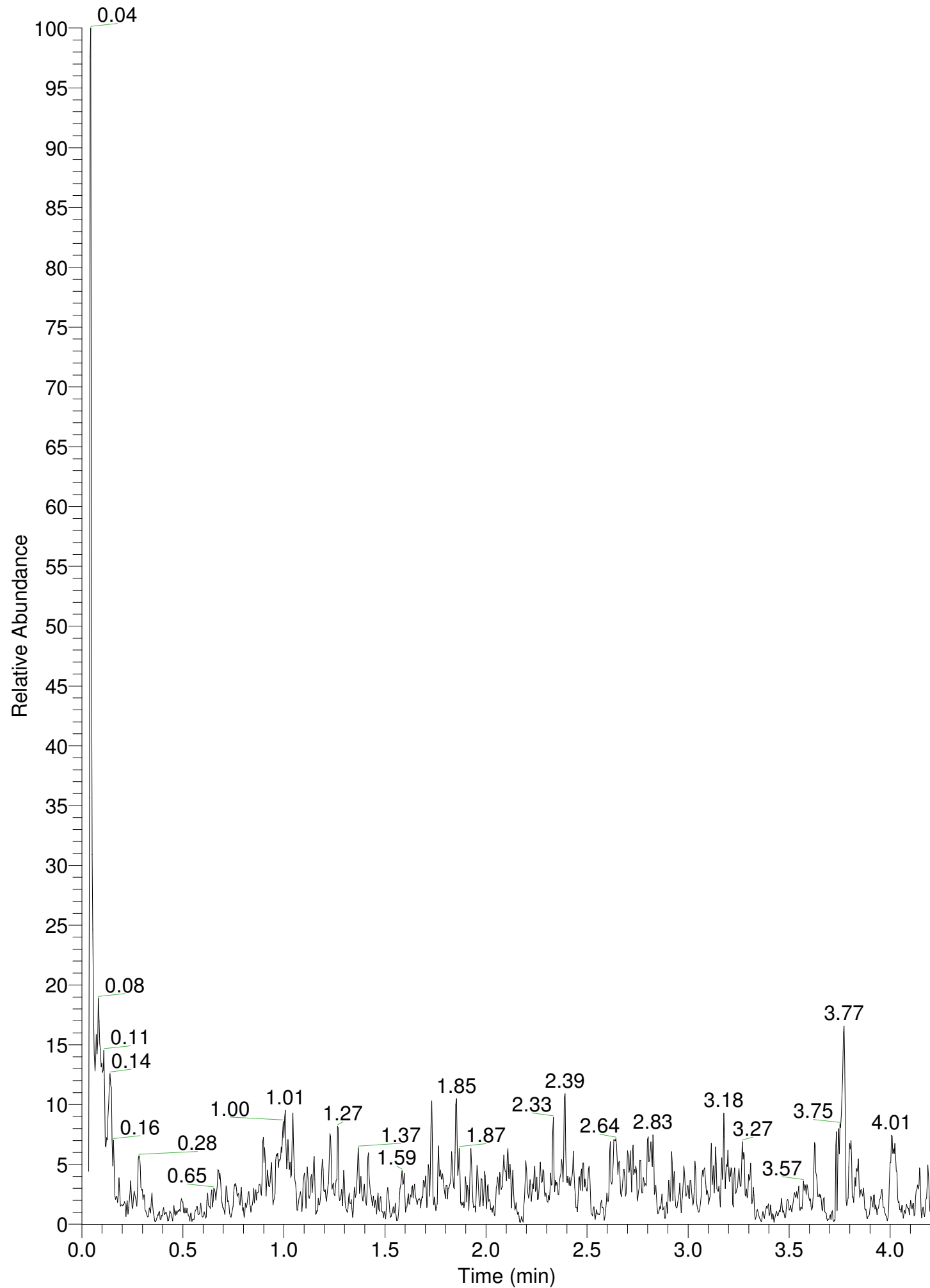


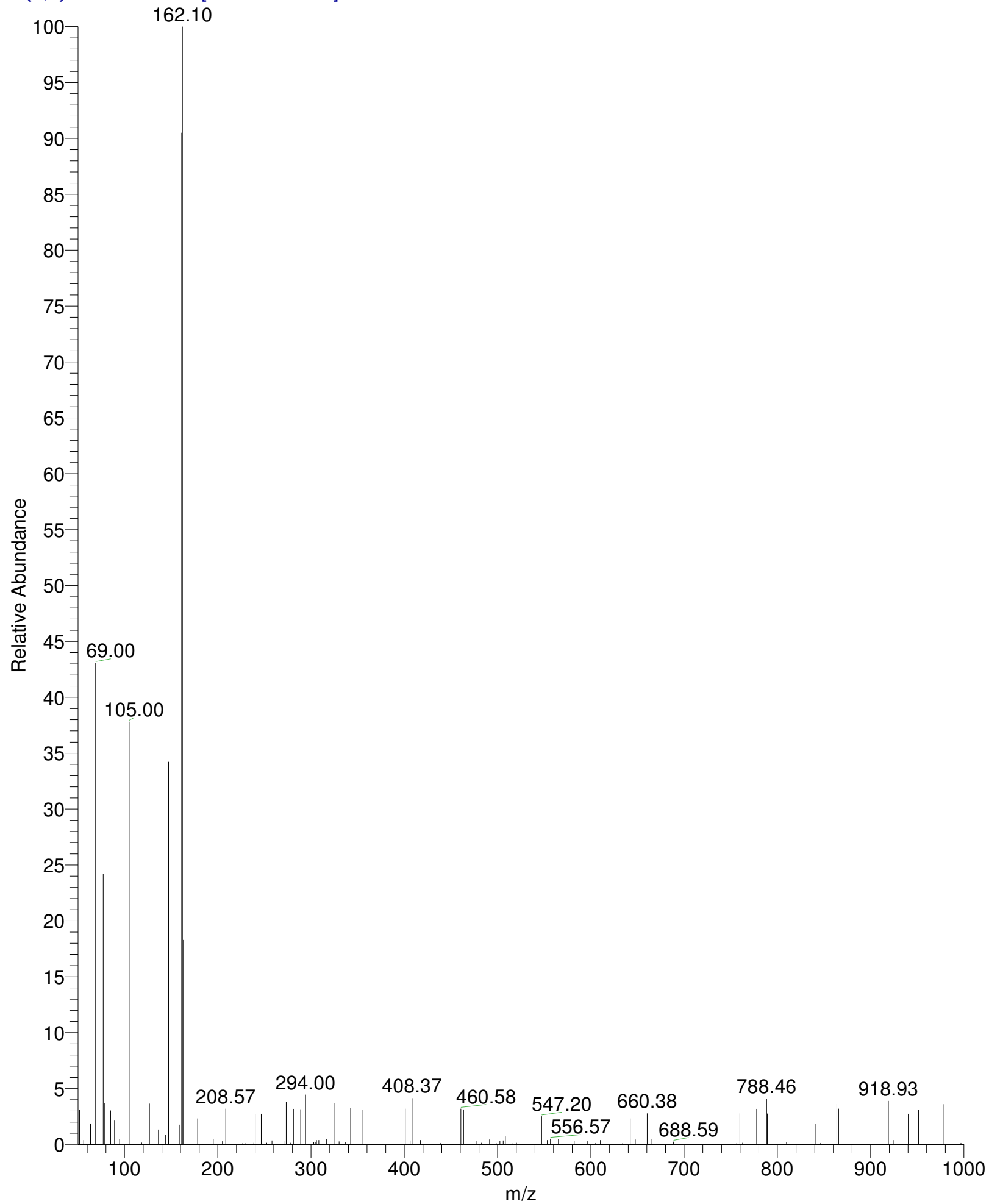
RT: 0.00 - 4.21

NL:
2.87E5
TIC MS
Selwan-59



Selwan-59 #15 RT: 0.08 AV: 1 NL: 1.15E4

T: {0,0} + c EI Full ms [50.00-1000.00]



Selwan-59#15 RT: 0.08

T: {0,0} + c EI Full ms [50.00-1000.00]

m/z= 50.00-1000.04

m/z	Intensity	Relative
50.01	5.9	0.05
50.57	0.2	0.00
51.73	351.3	3.07
54.17	0.0	0.00
55.30	0.1	0.00
56.16	43.7	0.38
59.07	0.0	0.00
63.48	212.6	1.86
65.21	0.2	0.00
68.24	0.1	0.00
69.00	4932.9	43.07
69.88	0.2	0.00
74.83	0.2	0.00
76.14	0.2	0.00
77.00	2772.1	24.20
77.75	0.1	0.00
78.44	417.8	3.65
81.78	0.0	0.00
84.18	0.3	0.00
85.09	346.8	3.03
89.15	242.0	2.11
90.29	0.0	0.00
91.61	0.0	0.00
93.92	0.3	0.00
94.73	54.3	0.47
100.65	0.1	0.00
102.23	0.6	0.01
103.80	0.1	0.00
105.00	4330.2	37.81
106.02	2.7	0.02
106.68	0.0	0.00
109.69	0.0	0.00
115.27	0.1	0.00
118.35	16.1	0.14
119.53	1.9	0.02
120.05	0.1	0.00
122.58	0.3	0.00
124.31	0.0	0.00
126.75	415.8	3.63
131.60	0.9	0.01
136.22	150.5	1.31
137.53	0.0	0.00
143.96	98.1	0.86
145.53	0.2	0.00
147.08	3918.4	34.21
148.26	0.5	0.00
148.97	0.1	0.00
149.73	1.8	0.02
153.55	0.0	0.00
158.61	200.9	1.75
161.15	10364.2	90.49
162.10	11453.6	100.00
163.13	2094.5	18.29
169.72	0.0	0.00
177.76	0.0	0.00

Selwan-59#15 RT: 0.08

T: {0,0} + c EI Full ms [50.00-1000.00]

m/z= 50.00-1000.04

m/z	Intensity	Relative
178.31	264.8	2.31
184.07	0.1	0.00
187.45	0.0	0.00
190.27	0.2	0.00
195.15	51.8	0.45
203.84	0.0	0.00
204.88	31.6	0.28
207.39	0.0	0.00
208.57	363.8	3.18
226.70	11.3	0.10
230.05	13.8	0.12
231.27	0.1	0.00
233.01	0.0	0.00
238.65	14.1	0.12
240.02	309.4	2.70
242.06	0.2	0.00
246.50	313.3	2.74
250.80	0.0	0.00
252.33	14.1	0.12
253.06	0.0	0.00
256.16	0.0	0.00
258.11	38.1	0.33
270.80	31.9	0.28
273.41	432.7	3.78
275.01	0.2	0.00
276.49	0.0	0.00
277.65	14.5	0.13
279.12	0.0	0.00
281.13	362.1	3.16
284.43	0.1	0.00
287.14	0.2	0.00
288.91	359.4	3.14
292.45	0.1	0.00
293.20	0.2	0.00
294.00	509.3	4.45
296.58	4.9	0.04
298.42	0.0	0.00
299.03	2.0	0.02
302.81	18.5	0.16
304.47	18.6	0.16
305.73	43.6	0.38
308.28	43.5	0.38
308.93	0.3	0.00
312.36	1.0	0.01
316.55	50.1	0.44
319.49	1.8	0.02
324.50	424.3	3.70
327.39	0.0	0.00
329.96	29.4	0.26
332.85	0.1	0.00
336.93	18.6	0.16
338.14	0.4	0.00
341.23	0.0	0.00
342.30	367.9	3.21
345.29	0.1	0.00

Selwan-59#15 RT: 0.08

T: {0,0} + c EI Full ms [50.00-1000.00]

m/z= 50.00-1000.04

m/z	Intensity	Relative
348.78	0.0	0.00
350.34	0.0	0.00
352.98	0.0	0.00
353.51	0.1	0.00
355.58	351.5	3.07
357.34	0.0	0.00
358.76	0.0	0.00
362.21	1.8	0.02
364.59	1.8	0.02
373.12	0.2	0.00
375.75	1.5	0.01
376.53	0.0	0.00
380.63	0.4	0.00
383.43	0.0	0.00
399.92	2.1	0.02
400.86	365.2	3.19
402.18	2.1	0.02
405.54	0.1	0.00
406.10	39.2	0.34
407.05	1.5	0.01
408.37	473.0	4.13
416.35	0.0	0.00
417.33	43.2	0.38
420.26	3.0	0.03
423.82	0.0	0.00
429.09	0.1	0.00
431.17	0.0	0.00
436.32	0.0	0.00
438.47	0.0	0.00
439.10	13.8	0.12
445.03	0.0	0.00
446.61	0.0	0.00
449.25	0.1	0.00
450.29	0.0	0.00
452.11	0.0	0.00
455.86	0.0	0.00
459.21	4.4	0.04
460.58	365.8	3.19
463.51	356.1	3.11
465.34	0.1	0.00
467.58	2.1	0.02
472.20	0.1	0.00
474.33	0.0	0.00
477.80	30.9	0.27
478.69	1.8	0.02
480.26	0.0	0.00
482.67	14.3	0.12
491.36	49.2	0.43
498.45	12.2	0.11
501.66	0.0	0.00
502.33	36.7	0.32
503.15	0.0	0.00
506.01	38.4	0.34
508.38	81.9	0.71
515.37	11.8	0.10

Selwan-59#15 RT: 0.08

T: {0,0} + c EI Full ms [50.00-1000.00]

m/z= 50.00-1000.04

m/z	Intensity	Relative
516.39	0.0	0.00
520.14	14.4	0.13
521.55	1.8	0.02
528.28	0.2	0.00
528.95	0.0	0.00
540.26	0.0	0.00
544.06	0.1	0.00
547.20	287.5	2.51
553.33	43.6	0.38
556.57	57.4	0.50
558.44	0.1	0.00
565.13	51.6	0.45
569.68	0.0	0.00
574.00	0.0	0.00
575.61	1.7	0.02
581.31	0.3	0.00
582.06	37.1	0.32
584.86	0.0	0.00
587.33	0.0	0.00
593.62	0.0	0.00
595.43	0.0	0.00
596.59	30.8	0.27
598.51	0.0	0.00
605.14	13.9	0.12
610.27	43.6	0.38
611.11	1.2	0.01
621.25	0.2	0.00
626.44	0.0	0.00
630.44	1.8	0.02
632.22	0.0	0.00
634.02	11.6	0.10
638.37	0.1	0.00
640.45	0.0	0.00
642.20	264.5	2.31
642.92	0.0	0.00
647.62	48.4	0.42
653.55	0.2	0.00
655.40	0.0	0.00
660.38	317.3	2.77
661.31	0.0	0.00
662.39	0.0	0.00
664.65	51.2	0.45
675.26	2.1	0.02
681.39	0.2	0.00
688.59	27.8	0.24
696.12	0.0	0.00
707.21	0.0	0.00
710.08	0.2	0.00
712.55	0.1	0.00
713.19	0.4	0.00
715.22	0.2	0.00
718.15	0.0	0.00
721.93	0.1	0.00
723.75	1.4	0.01
730.32	0.1	0.00

Selwan-59#15 RT: 0.08

T: {0,0} + c EI Full ms [50.00-1000.00]

m/z= 50.00-1000.04

m/z	Intensity	Relative
731.19	2.1	0.02
733.96	0.3	0.00
735.83	0.0	0.00
736.73	0.0	0.00
743.36	0.0	0.00
747.20	0.0	0.00
750.38	1.8	0.02
756.46	13.6	0.12
759.71	317.2	2.77
761.20	0.0	0.00
762.75	14.0	0.12
767.41	2.3	0.02
768.84	1.8	0.02
776.18	2.0	0.02
777.73	362.3	3.16
786.18	0.2	0.00
788.46	466.3	4.07
789.27	315.4	2.75
796.87	0.1	0.00
797.73	2.0	0.02
809.74	24.9	0.22
822.44	0.0	0.00
824.93	0.0	0.00
827.48	0.3	0.00
840.50	209.5	1.83
843.78	1.5	0.01
846.38	13.9	0.12
853.73	0.0	0.00
860.94	2.1	0.02
862.71	0.4	0.00
863.73	412.4	3.60
865.71	364.0	3.18
866.93	0.0	0.00
872.46	0.4	0.00
879.03	2.3	0.02
880.80	0.3	0.00
889.23	0.3	0.00
890.35	0.4	0.00
892.32	0.0	0.00
893.23	0.1	0.00
895.86	0.0	0.00
896.59	0.0	0.00
898.83	0.2	0.00
901.90	1.8	0.02
906.25	0.1	0.00
912.44	0.1	0.00
913.10	1.8	0.02
918.93	443.9	3.88
920.20	0.0	0.00
923.19	0.1	0.00
924.28	43.2	0.38
926.23	0.0	0.00
931.05	0.0	0.00
933.78	0.0	0.00
940.20	312.6	2.73

Selwan-59#15 RT: 0.08

T: {0,0} + c EI Full ms [50.00-1000.00]

m/z= 50.00-1000.04

m/z	Intensity	Relative
944.94	0.0	0.00
945.49	0.0	0.00
947.71	0.0	0.00
951.44	353.0	3.08
953.58	0.0	0.00
954.85	0.4	0.00
956.12	0.4	0.00
962.05	0.2	0.00
967.69	1.8	0.02
975.71	0.0	0.00
978.69	411.7	3.59
982.13	0.0	0.00
983.48	0.0	0.00
995.90	0.0	0.00
996.70	13.6	0.12
998.27	1.8	0.02